

Project Name

Fixture Type

ACB5.5

ACCESSORIES | Surface Mount Box

FEATURES

- 5.5" weatherproof, machined surface mount junction box.
- Highly aesthetic and crafted from solid aircraft grade (6061-T6), corrosion-resistant aluminum, then anodized and powder coated to create a highly durable, marine grade finish.
- Designed for bottom-feed wiring and to blend seamlessly with fixture finishes.
- Ample room for multiple connections and a small power supply unit.
- For use with 12V AC/DC or 120V - 277V AC power wiring.



5" Weatherproof Round Surface Mount Box: ACB5.5-BK

SPECIFICATIONS

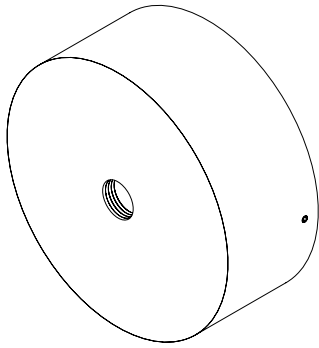
Materials Machined from billet 6061-T6 corrosion resistant aluminum.	Voltage For use with 12V AC/DC or 120V - 277V AC power wiring.	Mounting Accepts all 1/2"-14 NPS male fittings.
Finish Aluminum materials are first anodized and then powder coated for a robust, marine grade finish.		

ORDERING GUIDE

EXAMPLE: **ACB5.5-BK**

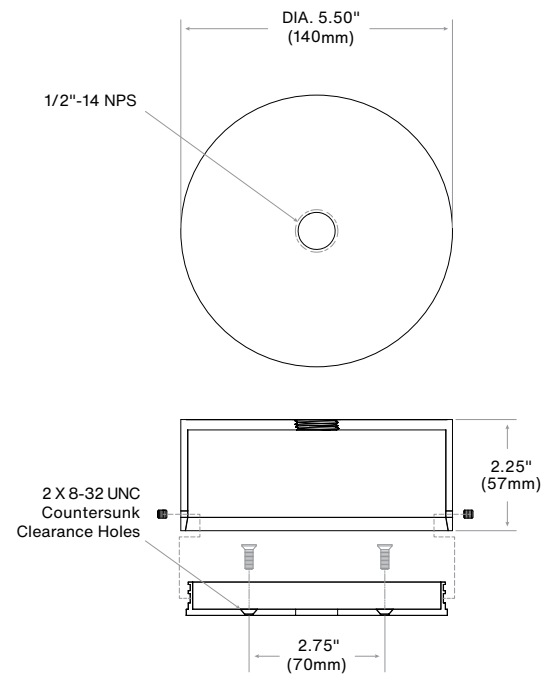
MODEL	FINISH	
ACB5.5		
Surface Mount Box with 1 Fixture Hole Aluminum (Standard)	BK	Black Powder Coat
	BZ	Bronze Powder Coat

PRODUCT DRAWINGS



ACB5.5

ACB5.5



Notes: