

Project Name

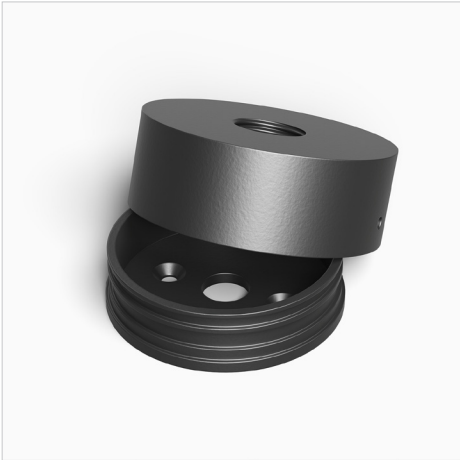
Fixture Type

ACMLJ

ACCESSORIES | Surface Mount Box

FEATURES

- 2.7" compact low voltage (12V) surface mount junction box.
- Highly aesthetic and machined from solid aircraft grade (6061-T6), corrosion-resistant aluminum, then anodized and powder coated to create a highly durable, marine grade finish.
- Designed for bottom-feed wiring and to blend seamlessly with fixture finishes.
- For use with 12V AC/DC only.



Compact Round Surface Mount Box: ACMLJ-BK

SPECIFICATIONS

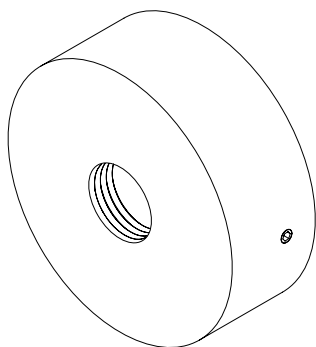
Materials Solid billet 6061-T6 corrosion resistant aluminum.	Voltage For use with 12V AC/DC only.	Mounting Accepts all 1/2"-14 NPS male fittings.
Finish Aluminum materials are first anodized and then powder coated for a robust, marine grade finish.		

ORDERING GUIDE

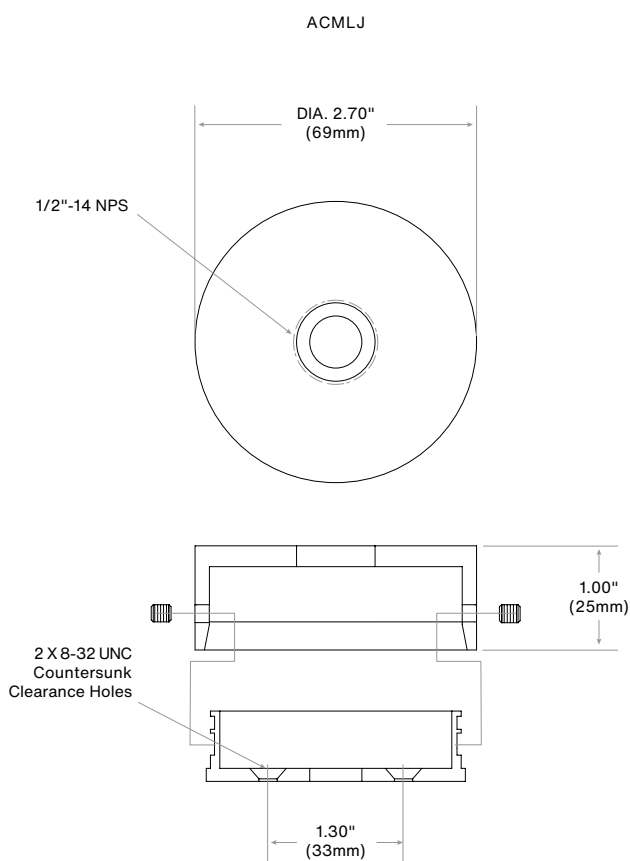
EXAMPLE: ACMLJ-BK

MODEL	FINISH	
ACMLJ		
Round Surface Mount Box Aluminum (Standard)	BK	Black Powder Coat
	BZ	Bronze Powder Coat

PRODUCT DRAWINGS



ACMLJ



Notes: