

# ARTOA16

ACCENT | 2.25" dia.

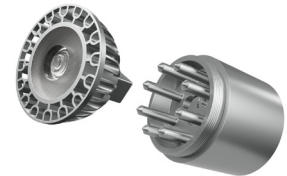
7.5W (640lm) | 12V | SORAA, LED Lamp, Halogen



SORAA LED Standard Round Accent: ARTOA16-SR in black

## FEATURES

- Versatile round, directional MR16 (GU 5.3) modern accent light for residential landscape and outdoor architectural environments.
- Flexible lamp configurations include SORAA LED Lamp with patented Heat Sink or use your preferred LED or Halogen lamp.
- Wet Location Listed, IP67 Standard.
- Machined from solid aircraft grade (6061-T6), corrosion-resistant aluminum, then anodized and powder coated to create a highly durable, marine grade finish.
- Innovative hydrophobic lens coating ensures clean, bright light for years to come.
- 240° vertical and 360° horizontal adjustment via locking swivel stem design.
- Field changeable optical lensing available.
- Available with adjustable Angled Glare Shield and ground, surface, or canopy mounting options.
- Every fixture tested end of line for water tightness and light quality.



### Integral SORAA® Heat Sink

US patented Thermobuster™ provides extra heat dissipation that reduces the lamp junction temperature by 77°F(25°C). Enables even the highest wattage SORAA® lamps to be used in an enclosed fixture without sacrificing its performance or life expectancy.

## SPECIFICATIONS

|  |  |  |
|--|--|--|
| <p><b>Materials</b><br/>Solid billet 6061-T6 corrosion resistant aluminum with 316 stainless steel hardware.</p>         | <p><b>Voltage</b><br/>12V AC/DC. Requires remote step down transformer.</p>  | <p><b>Optics</b><br/>Provided SORAA Lamp delivers 10° beam spread. Select optional SORAA Lamp Snap System Beam Spreader magnetic lenses to expand optical beam up to 60°. Accepts up to 3 accessory pieces (hexcel louver, optical lenses, etc.). Secured in place with metal snap ring.</p> |
| <p><b>Finish</b><br/>Aluminum materials are first anodized and then powder coated for a robust, marine grade finish.</p> | <p><b>Wattage</b><br/>Max. 9W for SORAA MR16 lamp with Thermobuster. Max. 50W for halogen lamp.</p>  | <p><b>Mounting</b><br/>Mounts using 1/2"-14 NPS male fitting compatible with all HK Lighting mounting accessories. Ships with extended 36" wiring leads with two Small (Blue) LightingShrink® connectors to ensure fast and watertight connections. (See page 4 for details)</p>             |
| <p><b>Hood and Glare Shield</b><br/>Weeping Hood Style. Angled Glare Shield available. (See page 4 for details)</p>      | <p><b>Light Engine</b><br/>MR16 Halogen lamp or MR16 SORAA LED lamp. Provided SORAA Lamp is CRI 90 and available in 2700K or 3000K CCT. More information at: <a href="#">SORAA MR16 GU5.3</a>.</p> | <p><b>Listings</b><br/>ETL Listed for Wet Location, IP67 Standard. RoHS Compliant.</p>   |
|  | <p><b>Dimming</b><br/>MLV, ELV Phase Control dimming. Please refer to website for <a href="#">SORAA MR16</a> dimmer compatibility.</p>   |  |
|  | <p><b>Lamp Base/Socket</b><br/>Standard bi-pin socket for GU5.3/G4/GX5.3/GY6.35/GZ4.</p>   |  |

## ORDERING GUIDE

EXAMPLE: **ARTOA16-SR-012VSL-08728-BK**

| MODEL  | PHYSICAL OPTIONS                  | LIGHT ENGINE  | SORAA LAMP   |  | MATERIAL / FINISH  |   |
|--|-----------------------------------|---|--|--|--|---|
| <b>ARTOA16</b><br>2.25" Accent Light<br>SORAA LED, LED Lamp<br>or Halogen Lamp<br>Low Voltage (GU 5.3) | <b>SR</b><br>SR Side Pivot, Round | <b>012V</b><br><b>VOLTAGE</b><br>012V 12V AC (GU5.3 Lamp) | <b>LAMP</b>  |  | <b>08722</b> Brilliant HL (7.5W, 10°, 2700K) Included <sup>3</sup><br><b>08728</b> Brilliant HL (7.5W, 10°, 3000K) Included <sup>3</sup> | <b>BK</b> Aluminum Black<br><b>BZ</b> Aluminum Bronze |
|  |                                   |   | <b>SL</b> SORAA Lamp Included <sup>1</sup><br><b>SN</b> SORAA Lamp Compatible <sup>1</sup><br><b>NL</b> No Lamp <sup>2</sup> |  |  |   |

<sup>1</sup> Only compatible with SORRA LED Lamp.

<sup>2</sup> Compatible with Halogen Lamp.

<sup>3</sup> Use SORAA Snap System Beam Spreader lenses to expand optical beams up to 60°.

### OPTIONAL ACCESSORIES (Not installed at time of order)

| GLARE SHIELD                              | SORAA LAMP   | SORAA SNAP SYSTEM BEAM SPREADER  | OPTIC LENSES  | MOUNTING   |
|---|--|--|---|--|
| <b>AGSA-16-XX</b> A/B Glare Shield Angled | <b>ASL-08728</b> SORAA Brilliant HL (7.5W, 10°, 2700K) Included <sup>3</sup><br><b>ASL-08722</b> SORAA Brilliant HL (7.5W, 10°, 3000K) Included <sup>3</sup> | <b>ALASO-SNAP17-03263</b> SORAA SNAP 17° Beam Spreader<br><b>ALASO-SNAP25-00325</b> SORAA SNAP 25° Beam Spreader<br><b>ALASO-SNAP36-00327</b> SORAA SNAP 36° Beam Spreader<br><b>ALASO-SNAP60-00329</b> SORAA SNAP 60° Beam Spreader | <b>ALVR-16</b> Hexcel Louver<br><b>AOSL-16</b> Overall Spread Lens<br><b>ALSL-16</b> Linear Spread Lens<br><b>ASOL-16</b> Solite Soft Focus | <b>GROUND MOUNT</b><br><b>AMHCS-06</b> 6" PVC Single Prong Spike (12V)<br><b>AMHCS-12</b> 12" PVC Single Prong Spike (12V)<br><b>AMH02-06-BZ</b> 6" Stainless Steel 3-Prong Spike (12V) Bronze<br><b>AMH02-12-BZ</b> 12" Stainless Steel 3-Prong Spike (12V) Bronze<br><b>AJB-1</b> Brass In-ground Junction Box<br><b>CANOPY MOUNT</b><br><b>ACM3-XX</b> 4.75" Square Canopy Plate<br><b>ACM5-XX</b> 5" Round Canopy Plate<br><b>SURFACE MOUNT</b><br><b>ACMLJ-XX</b> 2.7" Round Surface Box<br><b>ACB4.0-XX</b> 4" Round Surface Box<br><b>ACB5.5-XX</b> 5.5" Round Surface Box<br><b>EXTENSIONS</b><br><b>AEXS-16-12-XX</b> 12" Extension for ARTOA16<br><b>AEXS-16-24-XX</b> 24" Extension for ARTOA16<br><b>AEL-16-XX</b> Elbow for ARTOA16 |

• XX represents color option.

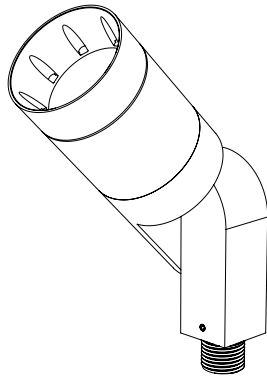
### OUTDOOR MAGNETIC TRANSFORMERS (120V input/12VAC Output)

TRANSFORMERS (Go to [Accessories](#) for detailed specification)

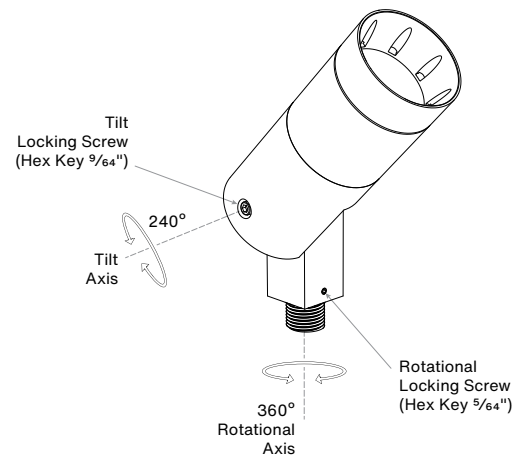
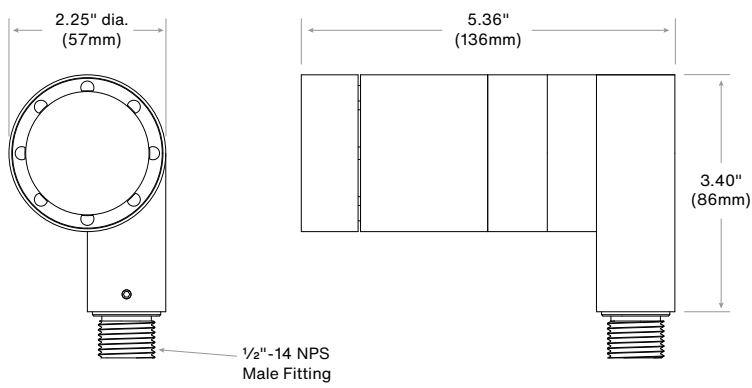
EXAMPLE: **ATXM-150-OTR-SS**

| ATXM  |   | OTR-SS       |           |                       |           |
|-------|---|--------------|-----------|-----------------------|-----------|
| MODEL |   | WATTAGE (VA) |           | PRIMARY VOLTAGE (VAC) |           |
| ATXM  | Stainless steel, wet location outdoor magnetic transformer Multitap   12-15VAC Output   MLV Dimming | 150          | 150 Watts | OTR-SS                | 120V Only |
|       |   | 300          | 300 Watts |                       |           |

## PRODUCT DRAWINGS



**ARTOA16-SR**

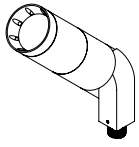


**Notes:**



## OPTIONS & ACCESSORIES

### HOOD OPTION



#### A HOOD

Versatile hood with 8 weep holes for water drainage. Regressed lens for glare control. Suggested for general use or when fixture is aimed in an up position.

### OPTIONAL GLARE SHIELD

For use with Hood, fastened with Set Screw



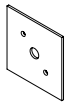
AGSA  
(angle)



### MOUNTING ACCESSORIES

Go to [Accessories](#) for options and full specifications.

#### Canopy Mount:



ACM3



ACM5

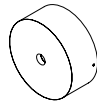
#### Surface Mount Box:



ACMLJ



ACB4.0



ACB5.5

#### Ground Mount:



AMHCS



AMH02-06



AMH02-12



AJB-1

#### Extension:

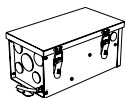


AEXS-16



AEL-16

### TRANSFORMER



**Magnitude Otter™ Landscape Transformer Series**  
150W or 300W, 120V input, multi-tap output, with light sensor and surge protection. (11.46" h x 6.132" w x 5.69" d)

ATXM-150-OTR-SS  
ATXM-300-OTR-SS

### WIRING For more information visit: [lightingshrink.com](http://lightingshrink.com)



ALSC-CR

**LightingShrink® Crimper**  
HK Lighting requires use of the LightingShrink crimper system for product warranty.



**LightingShrink® Connector Small (Blue) - 20 pack**

ALSC-SM20



**LightingShrink® Connector Medium (Yellow) - 20 pack**

ALSC-MD20