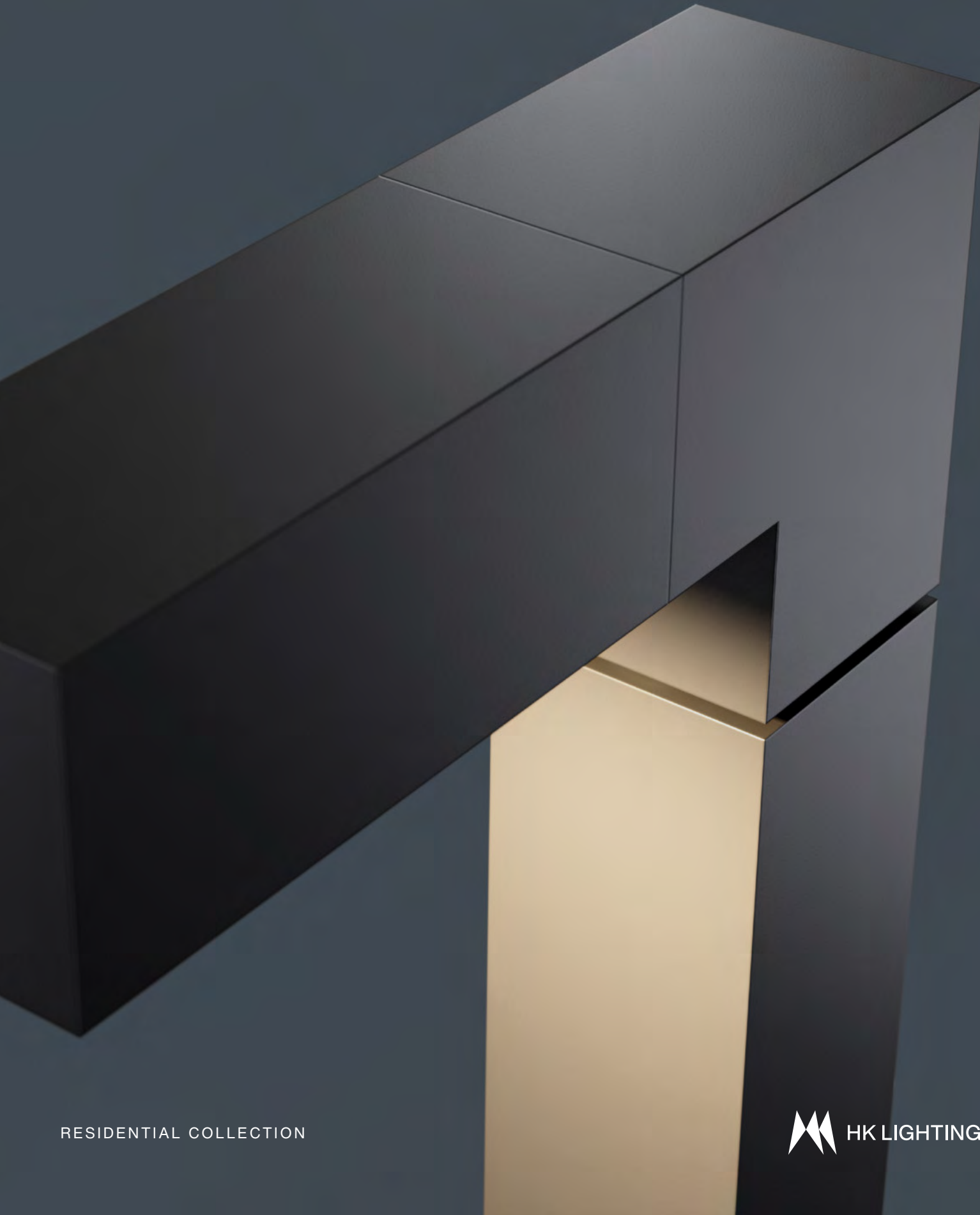



Designed to inspire.
Built to endure.



RESIDENTIAL COLLECTION

 HK LIGHTING



Timeless Design

Our fixtures integrate cleanly into any landscape, pairing timeless form with industrial precision. Each product enhances the landscape environment while delivering refined illumination after dark.

Powerful Performance

High-output fixtures deliver strong illumination from compact forms, enabling discreet installs without sacrificing impact on trees or architecture.



Enduring Quality

Machined from aluminum or brass, and finished to marine-grade standards, our fixtures are built for durability, corrosion resistance, and long-term performance in harsh conditions.



RESIDENTIAL COLLECTION



2 THE COLLECTION

Precision outdoor lighting designed for residential landscapes and architecture.

10 ACCENT

Highlight trees, plantings, and architectural features with directional, high-impact, and controllable light.

20 FLOOD

Deliver even, wide-spread illumination across walls, hedges, and hardscape features. Create contrast, backlighting, and subtle textural effects.

26 PATH

Light walkways, transitions, and low plantings with preferred light distribution that enhances wayfinding and nighttime safety.

34 IN-GRADE

Discreet fixtures engineered for seamless integration — illuminate walkways, edges, and architectural planes with subtle, purpose-driven light.

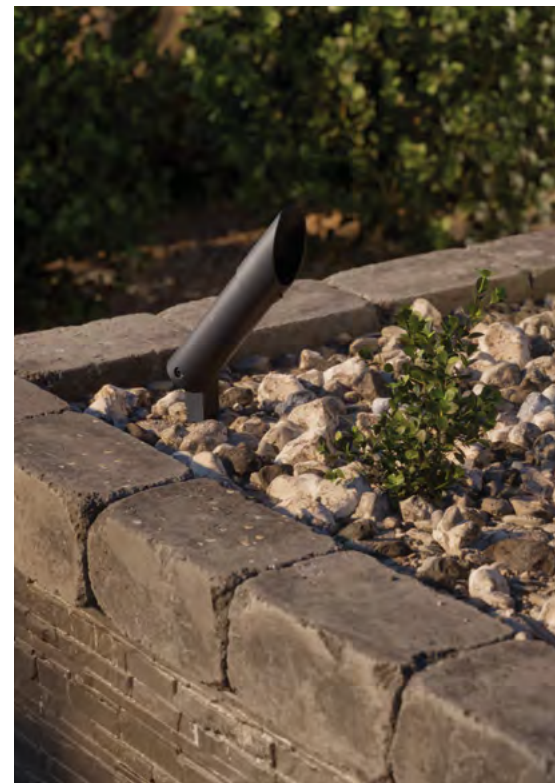
40 ACCESSORIES

Precision-engineered accessories control glare, elevate mounting, and ensure secure installation.

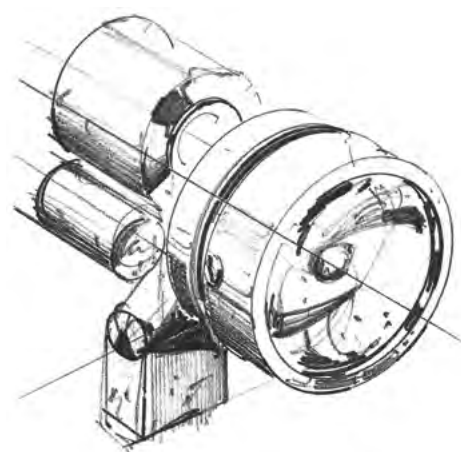
Integrating Excellence



Our Residential Lighting Collection has been thoughtfully designed to elevate landscapes, making it an ideal choice for discerning homeowners and integrators alike. Each fixture is built to order based on your selections and ships within 2 weeks.



Elevate the Everyday
Paint with light to focus attention and accentuate natural beauty. Our lighting seamlessly integrates with your chosen controls, guaranteeing synchronized and elevated experiences.



INTELLIGENT DESIGN

- Fully adjustable glare shield design.
- Swivel/lock system ensures maximum adjustability and durability.
- Modular LED designs adapt to your changing outdoor needs.
- Hydrophobic lens coating and thoughtful weep holes prevent water and debris buildup.
- Includes 36" lead wires and LightingShrink® connectors for fast and watertight installation.
- Easy to service while staying watertight.



Lifetime Performance

Our marine-grade, corrosion-resistant, and watertight construction guarantees top-tier light performance and longevity for the life of your project.



Beyond Illumination

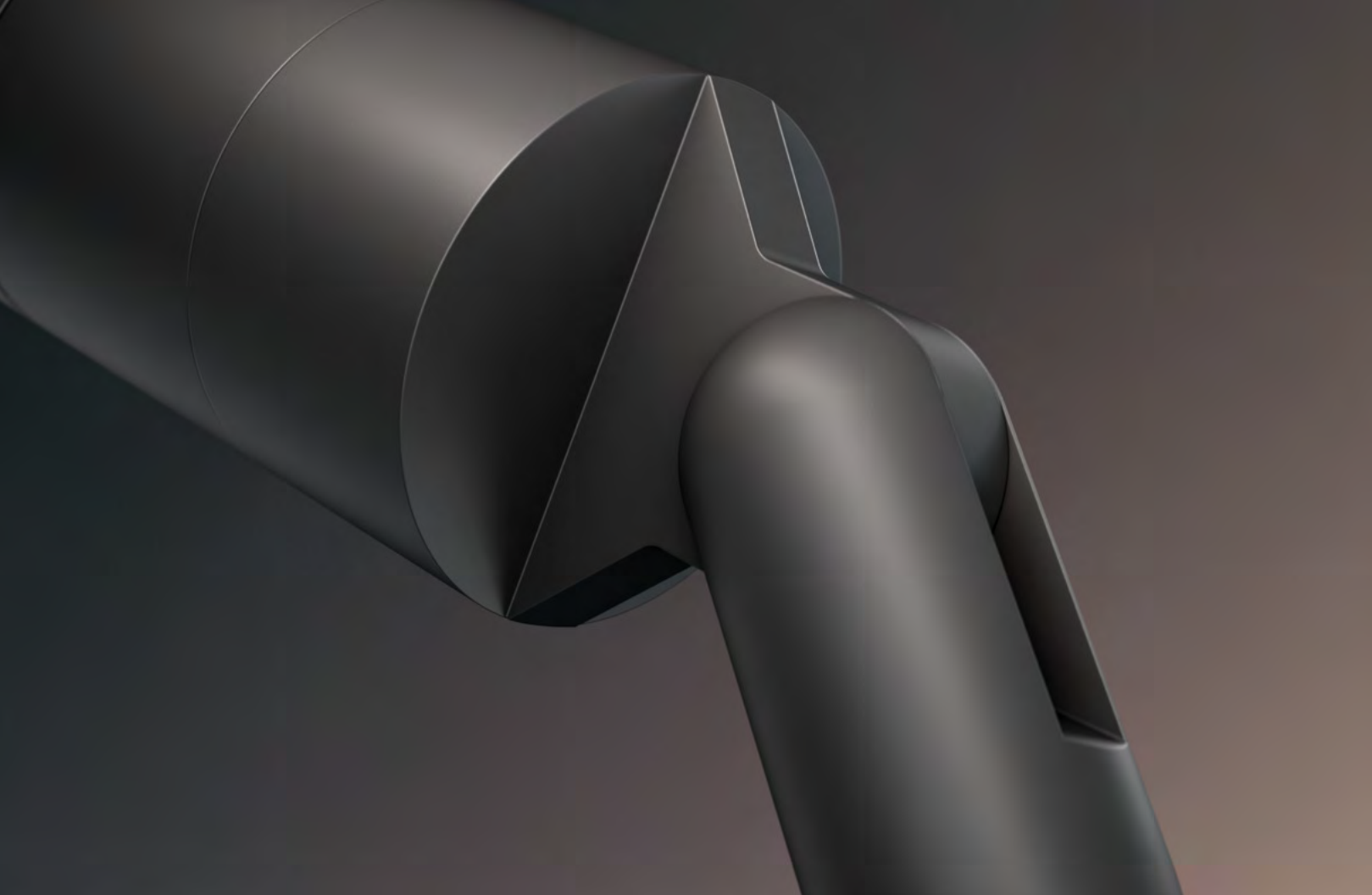
With superior light quality and projection, our low field-angle reflector puts light exactly where it's needed, eliminating hot spots. The fully adjustable Glare Shield adds precision and control.



Explore the Collection

Minimal footprint.
Maximum effect.

Focused illumination that
shapes and defines the outdoor
experience with precision and
intent, delivering performance
typically found in larger fixtures.



Accent

In 1986, our founder Hiroshi Kira introduced one of the first outdoor accent lights, designed to house the new MR16 lamp. Precision and compact form continue to guide our luxury fixtures today.



Our small but capable accent lights let you see the beauty of the light, not the fixture.



Enhance curb appeal and depth by highlighting visually prominent elements. Uplighting draws the eye toward the home and adds ambient light to walkways and façades for added comfort and safety.

ARTOAL08

Our smallest Accent Light, delivering up to 200 lumens from an integrated HK LED. It is ideal for illuminating small trees under 10 feet, sculptural elements, and low plantings. The small fixture and soft output make it a smart choice for discreet residential accents.



Precision, On Demand

The ARTOAL16 with adjustable beam lets you slide-set the ideal spread to illuminate trees, plantings, or architectural elements with exacting control.

ARTOAL11

The preferred residential outdoor Accent Light delivers up to 675 lumens from an integrated HK LED. Its compact form and powerful output for its size make it ideal for illuminating medium to tall trees, architectural columns, and residential façades from 30 to 80 feet. Multiple fixed beam optic options support precise lighting control.



ARTOAL16

Our most powerful and only true adjustable-beam Accent Light delivers up to 950 lumens from an integrated HK LED. The field-adjustable beam ranges from 14° to 70° and is ideal for illuminating mature trees and larger architectural elements. Beam spread can be fine-tuned on site and as the project evolves.



ARTOA16

Our modern side-pivot Accent Light uses a replaceable MR16 lamp to deliver up to 640 lumens of flexible output. It's ideal for highlighting trees, palms, or architectural elements where you want lamp choice and long-term serviceability. The distinctive side-pivot arm offers a clean, contemporary form.



ARTOA16-CP

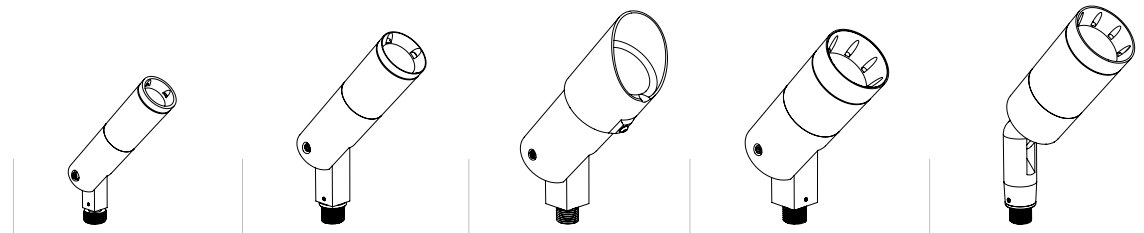
This traditional center-pivot Accent Light uses a replaceable MR16 lamp to deliver up to 640 lumens of flexible output. It's ideal for highlighting trees, palms, or architectural elements where you want lamp choice and long-term serviceability.



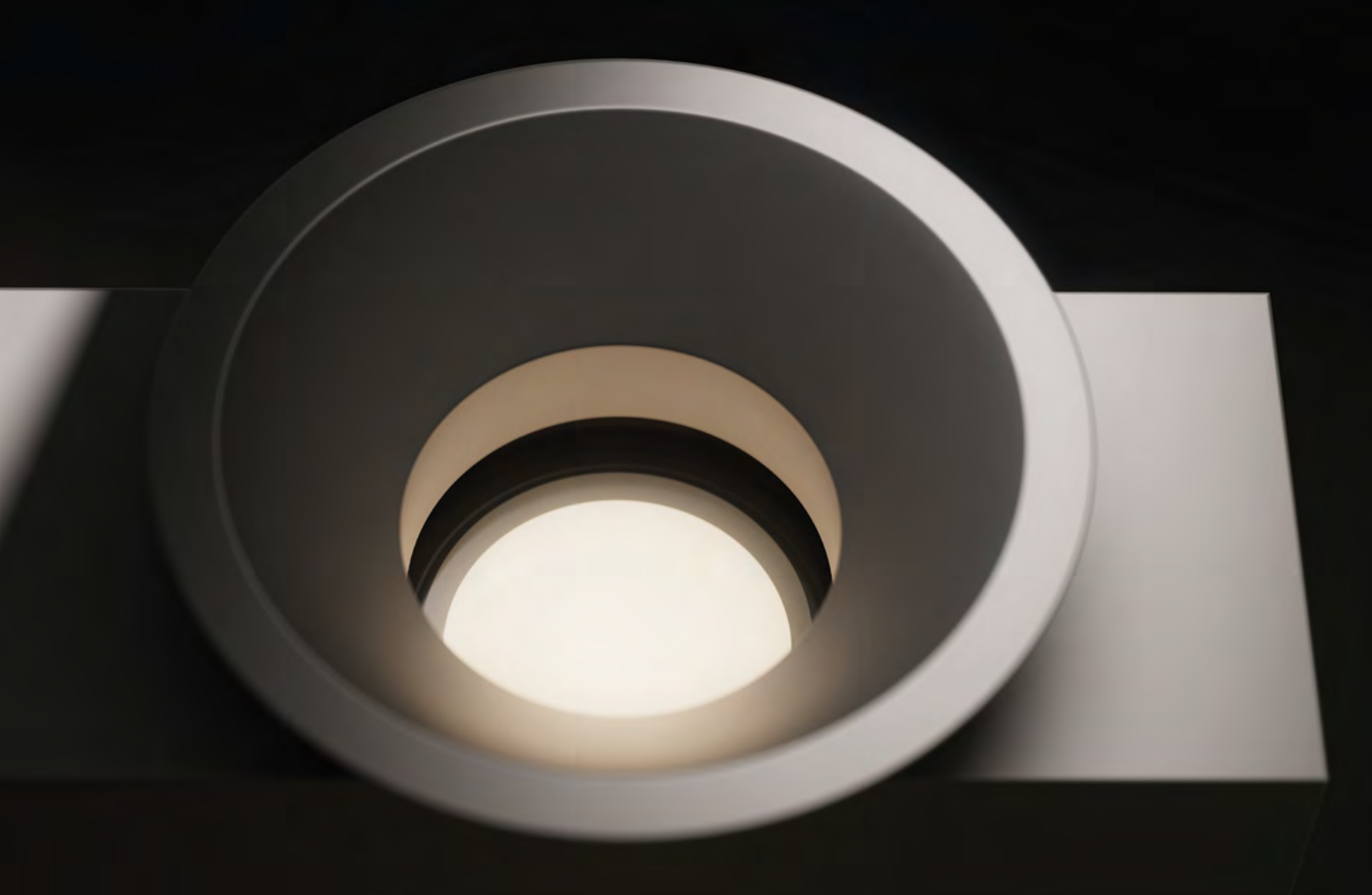


Our compact Accent Lights range from 1.25" to 2.25" in diameter and deliver up to 950 lumens of precise, intentional light.

Engineered fixture and optic design ensure accurate light projection with reduced spill and strong visual contrast. They highlight what matters without exposing the source.



	ARTOAL08	ARTOAL11	ARTOAL16	ARTOA16	ARTOA16-CP
Size	1.25" dia.	1.65" dia.	2.25" dia.	2.25" dia.	2.25" dia.
Style	Side Pivot	Side Pivot	Side Pivot	Side Pivot	Center Pivot
Aimability	240° vertical 360° horizontal	240° vertical 360° horizontal	240° vertical 360° horizontal	240° vertical 360° horizontal	240° vertical 360° horizontal
Voltage	12V	12V	12V	12V	12V
Watts (Lumens)	3W (200lm)	7W (675 lm)	5W (500lm) 10W (950lm)	7.5W (640 lm)	7.5W (640lm)
Light Engine	HK LED	HK LED	HK LED	SORAA LED	SORAA LED
Light Quality	90 CRI	90 CRI	90 CRI	90 CRI	90 CRI
CCT Options	2700K or 3000K	2700K or 3000K	2700K or 3000K	2700K or 3000K	2700K or 3000K
Optics	Narrow (19°), Medium (26°), and Wide (51°)	Narrow (29°), Medium (40°), and Wide (57°)	Adjustable Beam (14° - 70°)	10° Beam (expandable to 60° with SORAA Snap Lens System)	10° Beam (expandable to 60° with SORAA Snap Lens System)
Glare Shields	Angled Glare Shield Available	Angled Glare Shield Available	Angled Glare Shield Included	Angled Glare Shield Available	Angled Glare Shield Available
Dimming	MLV	MLV	MLV	MLV	MLV
Rated LED Life	50,000 hours	50,000 hours	50,000 hours	35,000 hours	35,000 hours



Precision optics cast a wide, even light that is ideal for walls, hedges, and architectural surfaces. Balanced output reveals texture and form without glare.



Flood and Wall Wash fixtures are designed with wider optics to softly highlight surfaces with even coverage. From small, arid plantings to expansive stone facades, this category delivers uniform coverage that enhances texture without glare.

Flood

Rooted in Hiroshi Kira’s philosophy of timeless design, powerful performance, and enduring quality, our Flood fixtures provide broad, even illumination—enhancing architectural and landscape features with soft, glare-free light.

ARTOFL08

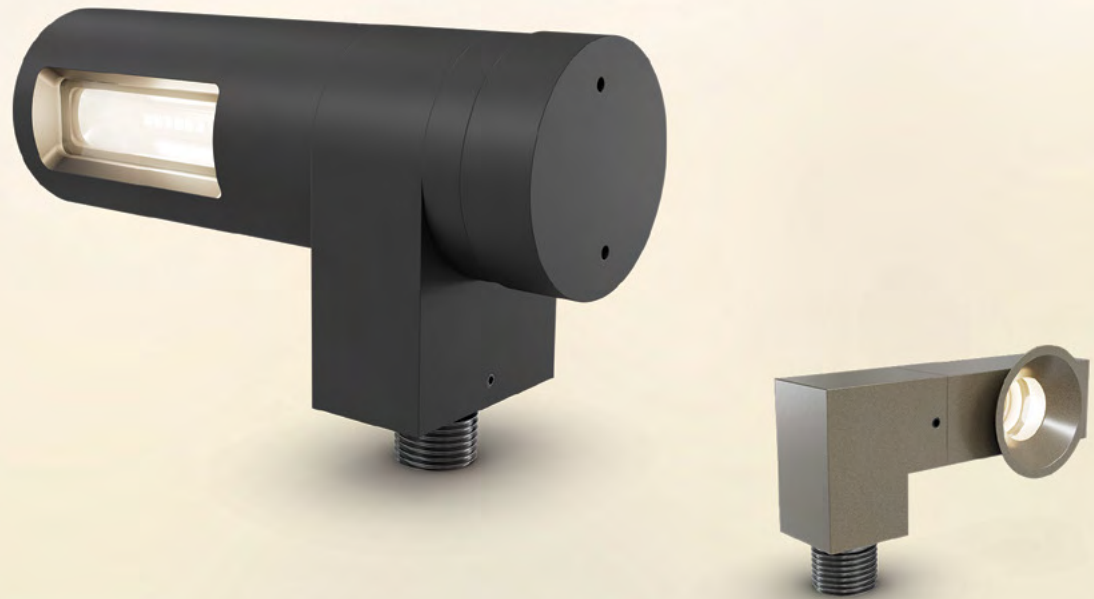
Our smallest Flood Light delivers up to 100 lumens from a compact 1.25" fixture. The integrated HK LED and soft, wide beam is perfect for the soft illumination of low plantings, signage, and architectural accents. The discreet profile and integrated glare shield help reduce source visibility day and night.



ARTOFL16

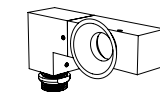
Our most powerful Flood Light delivers up to 500 lumens from a compact 2.25" form. Precision optics cast a wide, even light that is ideal for walls, hedges, and architectural surfaces. Balanced output reveals texture and form without glare.



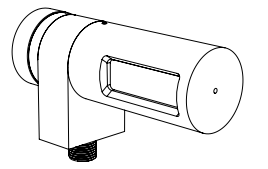


HK Lighting’s Flood and Wall Wash fixtures are engineered to deliver balanced, intentional light that reveals texture, defines space, and strengthens nighttime design.

Clean form, soft optics, and enduring performance make them a smart, lasting addition to any residential landscape.



ARTOFL08



ARTOFL16

	ARTOFL08	ARTOFL16
Size	1.13" dia.	2.25" dia.
Illumination Style	Short throw, even illumination	Longer throw, even illumination
Aimability	360° vertical 360° horizontal	360° vertical 360° horizontal
Voltage	12V	12V
Watts (Lumens)	3W (100lm)	8W (500lm)
Light Engine	HK LED	HK LED
Light Quality	90 CRI	90 CRI
CCT Options	2700K or 3000K	2700K or 3000K
Glare Shields	Included	N/A
Dimming	MLV	MLV
Rated LED Life	50,000 hours	50,000 hours



Path

With expertly crafted materials and timeless design, our Path fixtures illuminate walkways while enhancing wayfinding and nighttime safety. Slim 1" profiles and refined optics deliver precise light with minimal visual presence.



A refined alternative to traditional top-hat designs, the ARTOPLMB is ideal for modern residential applications where low-profile visibility and controlled light are essential.



A staggered layout with ARTOPLLT delivers clear, inviting path illumination using fewer fixtures. This approach creates a welcoming residential environment where the light leads without distraction.

ARTOPLMB-1

Our most discreet Path Light delivers up to 50 lumens in a smooth 180° spread from one side of a 1" round form. It is ideal for low plantings, ground cover, and narrow pathways. The minimalist design offers a clean, modern alternative to traditional top-hat path lights and is perfect for refined residential landscapes.



ARTOPLMB-2

This bold 1" mini bollard delivers 50 lumens of angular illumination from both sides of the fixture. Its high-contrast light is ideal for defined paths, structured planting areas, and modern landscapes where visual clarity and precision matter. The same compact form as the R1 provides a sleek appearance by day, with sharper visual impact at night.



ARTOPLLT

This 1" square post light delivers up to 125 lumens in a smooth 360° spread. It's ideal for lighting paths, open areas, and low plantings with even, low-profile illumination. Available in 12" and 24" heights, the clean aesthetic compliments modern landscapes.



ARTOPL11



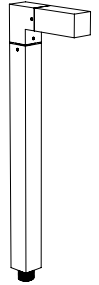
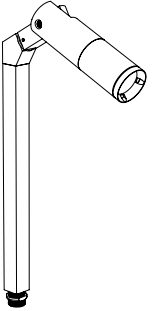
This 1.65" path light delivers up to 675 lumens of bright, directional light. It extends the ARTOAL11 design to 12" and 24" heights, making it a strong fit for signage, wide walkways, and bold landscape or architectural elements.





Our Path products vary in form, height, and lumen output, from 50 lumens for soft path and area lighting to 675 lumens for wider pathways and architectural illumination.

Each optic is engineered for clean projection and uniform light coverage across walkways, plantings, and architectural edges.

				
	ARTOPLMB-R1	ARTOPLMB-R2	ARTOPLLT	ARTOPL11
Size	1.25" dia. / 18" high	1.25" dia. / 18" high	1.13" dia. / 12 or 24" high	1.65" dia. / 12 or 24" high
Illumination Style	180° one-sided even illumination	Two-sided high contrast illumination	360° even illumination	Directional illumination
Aimability	360° horizontal	360° horizontal	360° vertical / 360° horizontal	240° vertical / 360° horizontal
Voltage	12V	12V	12V	12V
Watts (Lumens)	3W (50lm)	3W (50lm)	3W (125lm)	7W (675lm)
Light Engine	HK LED	HK LED	HK LED	HK LED
Light Quality	90 CRI	90 CRI	90 CRI	90 CRI
CCT Options	2700K or 3000K	2700K or 3000K	2700K or 3000K	2700K or 3000K
Glare Shields	N/A	N/A	N/A	Angled Glare Shield Available
Dimming	MLV	MLV	MLV	MLV
Rated LED Life	50,000 hours	50,000 hours	50,000 hours	50,000 hours



Compact size and a screwless bezel allow discreet use in steps, markers, and architectural details. The fixture provides uniform light with controlled glare and clean integration.



Small in-grade fixtures provide subtle perimeter illumination, step lights guide transitions, and uplights highlight the fireplace as a central feature.

In-Grade

The ultra-compact 1" Step and Marker delivers full optical precision from a one-inch in-grade form. The 1.7 watt LED fixture is machined from solid brass and provides 150 lumens with beam options of 20°, 35°, and 60°.

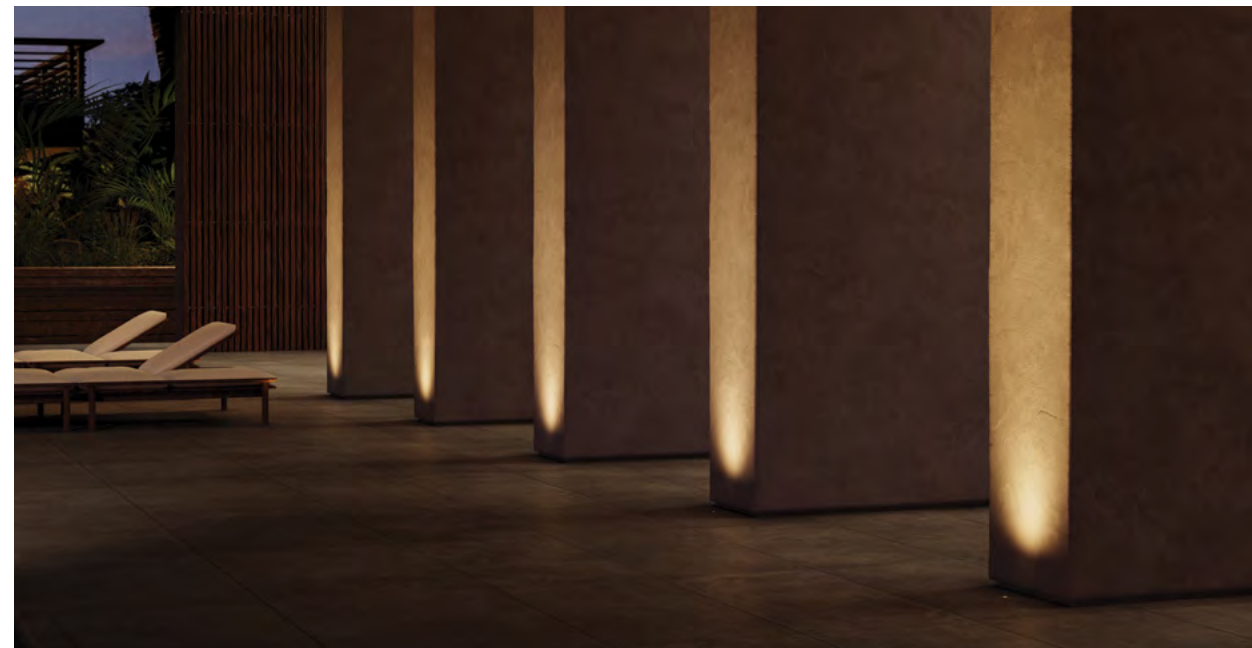


Diminutive in stature. Expansive performance.

At just one inch, the low profile bezel and focused optics allow the fixture to seamlessly blend into steps, marker positions, and other architectural features for a quiet visual experience.

Built to last in solid brass

Machined from marine-grade brass and sealed to IP68. The 1" Step & Marker endures harsh environments and maintains finish integrity and watertight performance.



Discreet design, bold results

The 1" Step & Marker blends into its surroundings. Focused light and refined optics reveal architectural detail without distraction.

ARTOGL1



STANDARD DIRECT VIEW

Focused accent for architecture and landscape details.



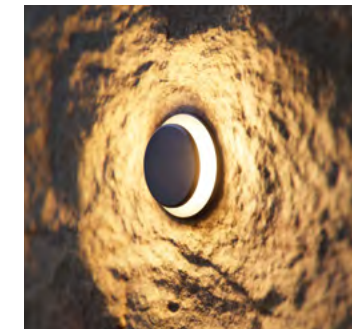
GLARE SHIELD

Controlled illumination with reduced glare and soft contrast.



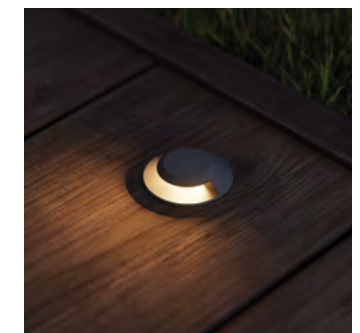
TOP COVER 360°

Uniform light for smaller surfaces and safe passage.



TOP COVER 180°

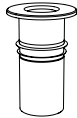



Half-beam light for pathways, steps, and edges.





Compact and discreet, these fixtures install cleanly into steps, markers, and architectural elements with uniform, glare-controlled illumination and durable, marine-grade brass construction.

All configurations ship with prewired leads and included accessories. The Integrated LED, shallow housing, and PVC sleeve reduce installation times, effort, and total project commissioning costs.

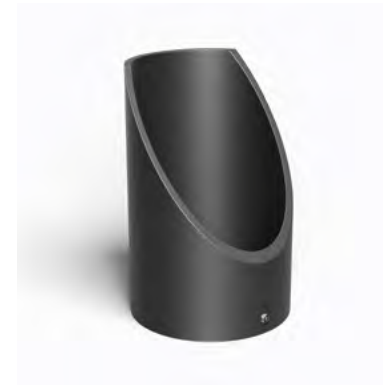
				
1" Step & Marker	STANDARD DIRECT VIEW	GLARE SHIELD	TOP COVER 360°	TOP COVER 180°
Installation Diameter	0.98" dia.			
Bezel Diameter	1.50" dia.			
Optics	Narrow (20°), Medium (35°), Wide (60°)		Shield Optimized	
Light Aimability	Full 360° rotation			
Voltage	12V			
Watts (Lumens)	1.7W (150lm)			
Light Engine	HK LED			
Light Quality	CRI 90			
CCT Options	2700K, 3000K			
Material	Solid corrosion-resistant brass with stainless steel hardware			
Finish	Black Powder Coated Brass or Bronze Powder Coated Brass			
Dimming	MLV or ELV Phase Control			
Rated LED Life	50,000 hours			
Drive-Over Rated	Yes	No	No	Yes
Dark Sky Compliant	No	No	Yes	Yes
Listings	CSA Listed for Wet Location, IP68. RoHS Compliant			



Accessories

HK Lighting accessories reflect the same precision and durability as our fixtures. They control glare, elevate mounting, and ensure secure installation across residential outdoor and architectural landscapes.

GLARE SHIELD



AGSA
Angled Glare Shield
Eliminates visible light at the source, reducing glare.

MOUNTING



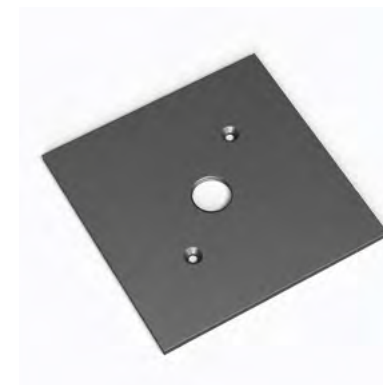
AMH02
Ground Mount / Spike
Three-prong ground stake for high stability.



AMHCS
Ground Mount / Spike
PVC single prong stake.



AJB-1
Ground Mount / Spike
Brass, concrete-pour-rated junction box.



ACM3
Canopy Mount
4.75" square mounting plate.



ACM5
Canopy Mount
5" round mounting plate.



ACB4.0
Surface Mount
3.5" round surface mount box.

MOUNTING



ACB5.5
Surface Mount
5.5" round surface mount box.



ACMLJ
Surface Mount
2.7" compact round surface mount box.



ATMR2
Tree Mount
Cup-shape tree mounting device.



AEXR / AEXS
Extension
Round or Square extension stem raises fixture height. 12" and 24" lengths available.



AEXF
Extension
Extension stem specifically designed for the ARTOFL16. 12" and 24" lengths available.



AEL
Extension
Angle link which provide larger aiming angle for a 'stem mount' type fixture.

OPTICAL



ALSL
Linear Spread Lens
Elongates the beam along one axis.



ALVR
Hexcel Louver
Reduces visible glare and spill light.



AOSL
Overall Spread Lens
Spreads and diffuses transmitted light, widening the beam slightly.



ASOL
Solite Lens
Soft focus lens diffuses light within the beam spread and softens edges.

SORAA® LED



SORAA® 08722 / 08728
SORRA Brilliant™ HL 08722 / 08728, MR16 (GU5.3) Compatible.



SORAA® SNAP™ Lenses
SORAA SNAP Beam Spreaders.

ACCESSORIES

TRANSFORMER & WIRING



ATXM-150/300

Transformer

Magnitude Otter™ Landscape Transformer Series 150W or 300W, 120V input, multi-tap output, with surge protection.

(11.46" h x 6.132" w x 5.69" d)



ALSC-CR

Wiring

Lighting Shrink Crimping Tool.



ALSC-MD20

Wiring

Medium (Yellow) Gasket Lighting Wire Connector 20-pack.



ALSC-SM20

Wiring

Small (Blue) Gasket Lighting Wire Connector 20-pack.

The **ARTOGL1** features a compact form and screwless bezel for discreet installation in steps, markers, and architectural details, delivering uniform illumination with controlled glare.



Professional grade lighting now available for your residential applications. Each fixture is built to order based on your selections and ships within 2 weeks.

Learn more at [hkluxury.com](https://www.hkluxury.com)



“I am creating a paintbrush to draw light effects and art on a landscape canvas.”

Hiroshi Kira
Founder HK Lighting



RESIDENTIAL COLLECTION

Designed to inspire.
Built to endure.

HK LIGHTING

2151 ANCHOR CT, THOUSAND OAKS, CA 91320 | 805.480.4881 | DEALERS@HKLIGHTING.COM | HKLUXURY.COM

03/24/26